

DAILY REPORT #12 – DORIS NORTH INFRASTRUCTURE/ NORTH DAM

Prepared by:	John Kurylo/ Jeff Orr	Date:	2012.01.17
Reviewed by:		Project #:	1CH008.058.0320
Role	Company	Personnel – Position	On Site
Client	Hope Bay Mining Limited (HBML)	Angela Holzapfel – ESR Compliance Manager David Vokey – ESR Coordinator Don Ethelston – HSLP Advisor Dean Wold - Safety Jill Turk – ESR Coordinator Katsky Venter – ESR Manger Michelle Tanquay – ESR Site Manager Stirling Kelly – HSLP Advisor	No Yes No No No No Yes Yes
	JDS	Lloyd Jackson – Mechanical Superintendent Sven Archimowtiz – Electrical Superintendent Doug Fielding – Construction Manager Ishan Fechter – Construction Coordinator Jerry Graham – Construction Manager Kevin Whieldon – Project Coordinator Mark Valeriote – Construction Manager	Yes Yes No Yes Yes No No
Engineering Design Consultants	SRK Consulting (Canada) Inc.	John Kurylo – Site Engineer Megan Miller – Site Engineer Lawrence Borowski – Site Engineer Murry McGregor – Site Engineer Lowell Wade – Senior Engineer	Yes No No No No
	EBA Engineering Consultants Ltd.	Jeff Orr – Project Manager Jennifer Stirling – Geologist Thomas Bradshaw – Junior Engineer	Yes No No
Earthworks Contractor	Nuna Logistics	Bradford Watkin – QC Manager Dale Craig – Safety Don Webber – Foreman Doug Haverland – Area Superintendent Gary Sodhi – Field Engineer Georges Cornelissen – Survey Manager Jeff Roberts - Surveyor Jim Cardinal – Foreman Kevin Oakes – Project Engineer Kevin Kozdrowski – Foreman Margret Caley – Surveyor Matt McKay – Civil Supervisor Mike MacMaster – Surveyor Mike Price – Field Engineer Nick Stoneberger – Superintendent Rick Peters – Foreman Ron MacMaster – Surveyor Simon Chipper – Civil Supervisor	Yes No No No Yes No Yes No Yes Yes No No Yes No Yes Yes Yes Yes
External Distribution List:	SRK: Maritz Rykaart, Lowell Wade, Iozsef Miskolczi, Seema Kang, Silkie Wong EBA: Robert Zschuppe Nuna: Chris Petrovic JDS: Bob Prince-Wright HBML: Dave Power, Gerry Benson		
This Construction Daily Report is produced as an internal communication document between SRK site and head office staff. Any distribution of this report outside of SRK is done as a courtesy, and the information contained in this report are for information only to those external parties.			

WEATHER (ROBERTS BAY)

<http://www.wunderground.com/weatherstation/WXDailyHistory.asp?ID=INUNAVUT3>

Temperature/Wind Chill (°C)	6AM:-27.6/-44.5	12PM:-21.7/-36.4	6 PM :-18.4/-31.8	12 AM:-21.3/ -37.1
Precipitation (mm)	Rain: None		Snow: None	
Conditions	Day Shift: Low visibility to White Out High wind		Night Shift: Blowing snow, moderate wind	
Daily norms (°C)	24 hour high: --15.7		24 hour low: -28.9	

HEALTH, SAFETY AND ENVIRONMENT

- No incidents were reported.
- Around 11:30 'white out' conditions were called and all construction activities stopped on site.
- Around 2:30 -3:00 the 'white out' was lifted and changed to a 'Level One' (only low risk activities).

COMMENTS, CORRESPONDENCE AND ACTIVITIES**DAILY MEETING WITH NUNA AND HBML TEAM:**

- The daily meet was attended by ADCO, ACI, Williams Wireless, Nuna [Nick Stoneberger, Kevin Oakes, Bradford Watkin], Newmont Safety [Stirling Kelly], JDS [Jerry Graham, Ishan Fechter, Lloyd Jackson], SRK [John Kurylo], EBA [Jeff Orr].

Topic	Status
Health and Safety and Environment	<ul style="list-style-type: none"> • Weather had been changing. Drive the conditions, when in doubt slow down and take it easy. • A railings and ramp has been built by the Doris Camp Tank Farm.
North Dam	<ul style="list-style-type: none"> • FCM placement is expected to result this morning. • SRK and Nuna to go out and inspect clearing before placement. • Nuna continues the 5/8" clear cover removal and general cleaning at the North Dam. Additional cleaning of the key trench is planned for today.
Water Management Structures	<ul style="list-style-type: none"> • The snow road construction around the Doris North Diversion Berm area is planned to continue today. • JDS requested that Nuna survey stake out the remainder of the Doris North Diversion Berm for better visualization.
General	<ul style="list-style-type: none"> • SRK/ EBA inquired about getting their generator, for drilling core, serviced. SRK/ EBA to drop of the generator at the Kingland Ford shop in the coming days. • A challenge will clear snow that blew in near Windy today. • ATCO requested that their ramp at the Vent Raise pad be scarified. Nuna to address this. • One of the excavators requires a new radiator. This part is on order. A 330 excavator is being used in place of this out of service excavator.

SURVEY:

Required	•
Data Received	<ul style="list-style-type: none"> • EG 120114 Bedrock Pickup for DNDB.csv • AB 120117 ND FCM EXC.csv • SM 120117 NORTH DAM 5-8 EXC.dwg and .pdf
Outstanding	•
Upcoming	<ul style="list-style-type: none"> • Survey of frozen core surface after cleaning/ scraping activities at N. Dam (on going). • Survey of FCM after placement (on going).

NORTH DAM/FROZEN CORE PLANT PAD:**Frozen Core Plant**

- Around 9:30 am the FCP started to produce FCM
 - Shortly after starting up, due to disorganization with the trucks, the plant was shut down. Within ~ 15 minutes the plant was restarted.
 - FCM was initially coming out of the plant around 33°. After the short shut down the temperature of the core was around 41° (as the burner was not turned off during this period). After ~10 minutes the FCM temperature was back down to ~ 33°.
- Around 10:30 am the production rate/ belt speed at the FCP was increased.
 - The belt dial setting was increase in the range of 50% (approximately from 20 to 30).
 - FCM temperatures leaving the chute were ~ 28 to 30°.
- In total 50 loader buckets were loaded into the FCP hopper during today's production.
- A D9 Dozer was used to break up and sort out large pieces/ clumps of frozen FCM at the stockpile on the FCP Pad.

Dam Shell

- No significant activity.

Key Trench

- One excavator (equipped with a finishing bucket) was used during dayshift to assist with final cleaning and to remove additional frozen 5/8" clear material in the key trench.
- Nuna survey picked up and as-built of the existing key trench excavation/ clearing progress (from ~ chainage 1+17 to 1+38).
 - Nuna survey completed a preliminary isopach for the key trench clearing around 1+17 to 1+38 (see Figure section of this report).
 - SRK completed a preliminary isopach review to compare the existing key trench elevation to the 2011 FCM surface from ~ station 1+17 to 1+38. In general the existing surface was noted to be typically 0 to 0.05m (0.2m avg) above the 2011 FCM grade in this section. Details of this review are provided in the Figure section of this report.
 - Additional clearing (likely with the excavator and finishing bucket) is required on section 1+17 to 1+38 to remove some unsaturated 5/8" clear material.
- Dental cleaning resulted around ~ station 0+80 to 1+00 before placement.
 - Cleaning was completed with the use of the Bobcat (equipped with a brush) and the air blower/ compressor.
 - The remaining metal fragments, from the location where the culvert sump was previously located (around station 0+85), were ripped out. This area was approved for placement after cleaning.
- An additional area from ~1+00 to 1+17 was cleaned for placement. No placement resulted on this section and additional snow clearing will now be required.
- 5/8" clearing from ~ 0+35 to 0+70 (see isopachs in SRK Daily #11) was inspected today.
 - Some 5/8" material, that could still be readily scraped from the surface (could be kicked up by boot) remains in this area. Additional clearing (likely with excavator with finishing bucket) is still required.
 - The 5/8" material on the higher elevation key trench sides is not fully saturated and is not combined in with the core, like portions of the 5/8" material in the central area was.
 - See Photos 2 and 3 for additional details.
- SRK held discussions with Nuna Field Engineer/ QA about Inspection Signoffs on the FCM freeze back and lift dental cleaning (before placement).
 - Nuna cleaning/ freeze back Inspection Acceptance forms will only be signed off in the field, if required.
 - Comments on cleaning and inspections are typically documented in SRK's daily reports.
 - All relevant parties (i.e. typically Nuna and SRK) must be present for the inspection.
 - Note that cleaning can only be approved immediately before placement and it is not valid if

- placement does not occur immediately after approval. If there are long breaks in placement they typically re-cleaning should be expected, as snow and debris typically blows back in.
 - o Nuna field personnel, SRK and EBA have been working well together on the cleaning and approvals before placement.
- FCM placement resulted at the North Dam in the morning.
 - o FCM was placed from ~ 0+80 to 1+00.
 - o The rough, hard to clean surface from the 2012/01/15 placement was covered with FCM.
 - o The smooth drum compactor was used today leaving a much neater finished surface.
 - o Production went quite smooth however needed to be shut down around 11:30 due to 'white out' conditions on site. The white out lasted throughout the day. Only 'low risk' activity was allowed for the rest of the day at the dam.
- Figure 1 presents a progress figure and field notes for today's placement.

Field Geotechnical Testing, Laboratory and Sampling

- Single bead #52 was installed near the central portion of the key around station 0+84. The initial single bead reading is outlined below.

SingleBead No.	Temperature (°C)			
	At 11:45			
52	21.52			

- A summary of the material testing progress for 2012/01/16 is presented in the tables below.

PARTICLE SIZE DISTRIBUTION SUMMARY

Collected	Processed	Completed
HB-FCP-CORE-PSD2-QA-20110117		HB-FCP-CORE-PSD1-QA-20110115

MOISTURE CONTENT SUMMARY

Collected	Processed	Completed
HB-FCP-CORE-MC3-QA-20110117		HB-FCP-CORE-MC1-QA-20110115
HB-FCP-CORE-MC4-QA-20110117		HB-FCP-CORE-MC2-QA-20110115
HB-FCP-CORE-MC5-QA-20110117		

COMPACTION TESTING SUMMARY

Number of Tests	Material	Tested By	Shift	Notes
4	2:3 FCM	JO	Day	All Passed

- Minor maintenance and cleanup was done in the lab.

DORIS NORTH CAMP:

- The snow road around the Doris North Diversion Berm area has been started. Some minor additional work was completed on the snow road today.
- SRK issued IFC Rev 2 for the Doris North Camp Area Diversion Berm package. Dwgs DN-WDB-02 and DN-WDB-03 have changed/ been revised.

GENERAL:

- Flights in and out of site were canceled for a second day in a row due to weather (high winds, poor visibility and later 'white out' conditions).

PHOTOS:



Photo 1: Compressed air blow hose being used to clean around the removed sump location (around station 0+85).



Photo 2: Close up view of surface cleaning around station 0+60. Note that this 2011 frozen core can be observed at this surface. This area is near a grade acceptable for placement.



Photo 3: Close up view of surface cleaning around station 0+50. Note that frozen and loose 5/8" material is observed at this surface. This area required further scraping (likely with an excavator with a finishing bucket) before approval for placement. Note that the 5/8" material higher on the slope is less saturated and not incorporated into the FCM like it was observed to be in the central area.



Photo 5: ~ E view of FCM starting to be placed around, 0+85 over frozen lift placed on 2012/01/15.



Photo 6: Smooth drum compacting FCM, placed by the 330C excavator around station 0+80 to 0+90, ~ ESE view.



Photo 4: Bobcat with brush and excavator cleaning key trench from ~ 1+00 to 1+17, ~ E view.

Note: Progress photo of the North Dam construction from Photo Point 1 and 2 were not taken today due to poor visibility.

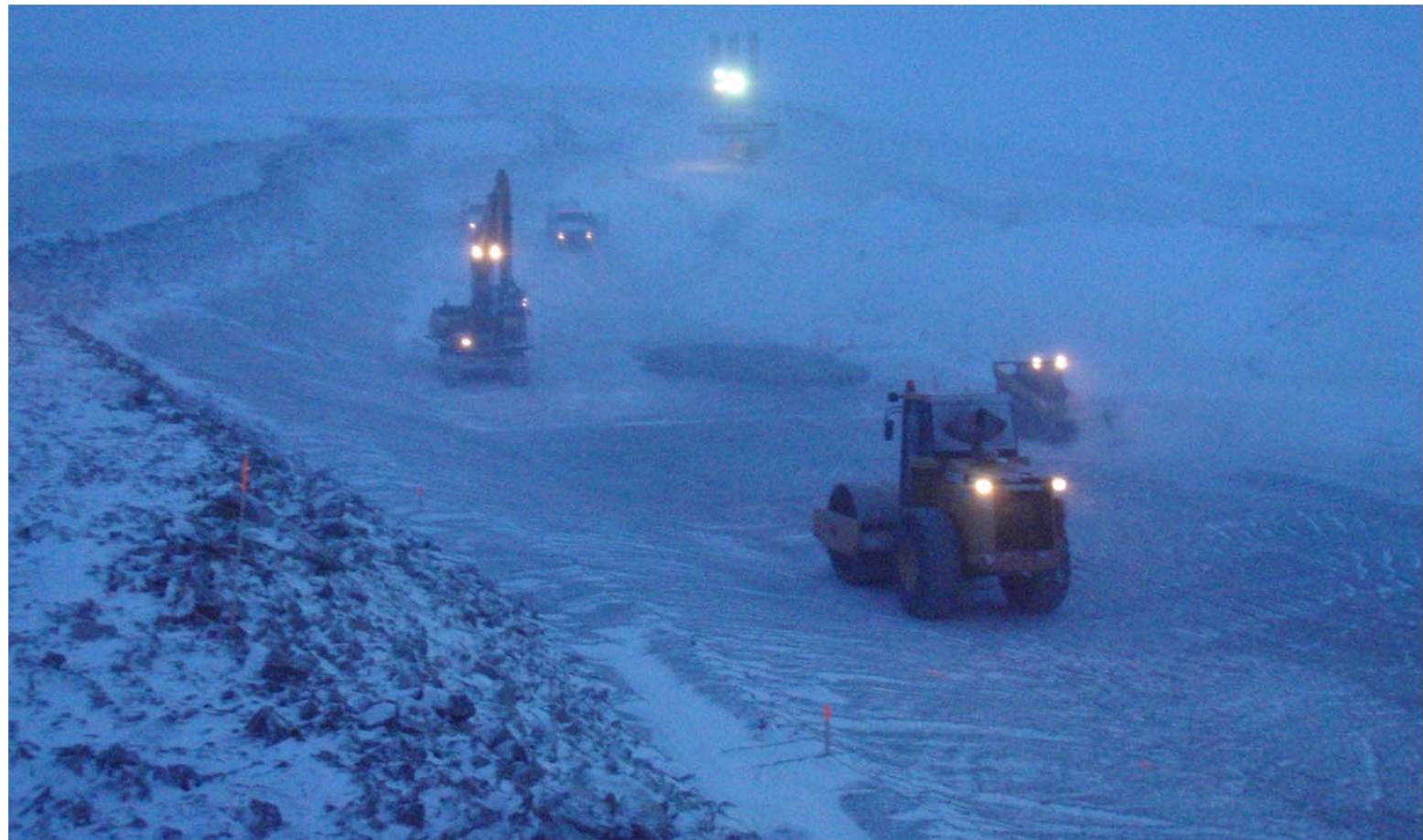


Photo 7: ~W view of construction progress in the key trench. Note that this picture was taken after the first two loads of FCM were placed today.



Photo 9: Smooth drum vibratory compactor packing FCM around the inflection point of the key trench. Note the installed single bead thermistor in the white bucket.



Photo 8: Compaction testing around station 0+80 in the key trench.



Photo 10: View of FCM placed today around the central portion of the key trench ~ 0+80 to 1+00. Note that conditions are progressing towards 'white out'.



Photo 11: ~NE view towards the snow road construction around the Doris North Diversion Berm footprint.

FIGURES: - Field notes/ progress figure for FCM placed today (based on visual observation, i.e.as-built survey still to be picked up)

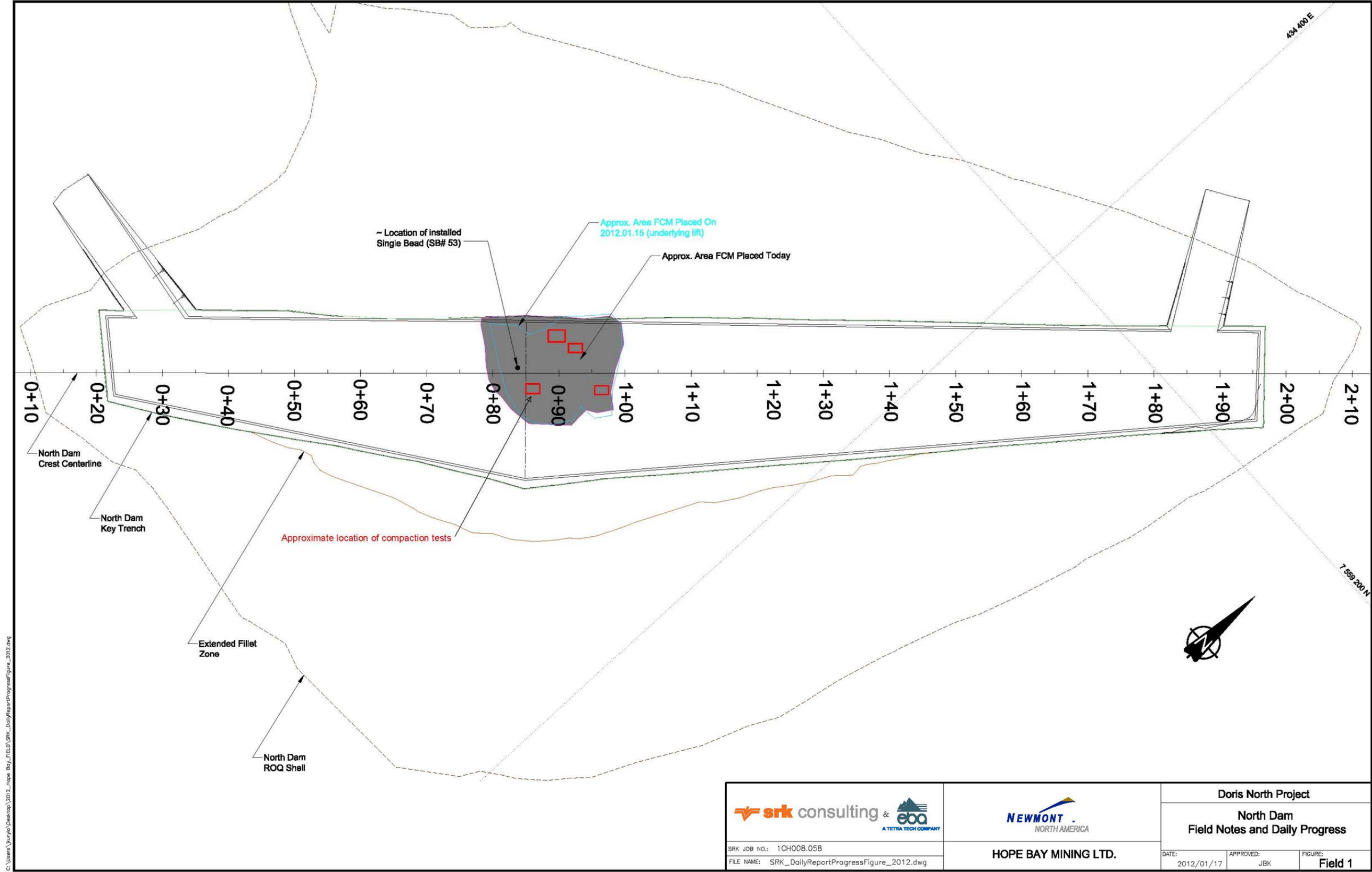


Figure - SRK Preliminary As-built review of Key Trench cleaning (5/8" material removal) completed on 2012/01/17, ~ between 1+17 and 1+38.
- Note that the existing elevation, in relation to the 2011 FCM surface, is shown in the isopach below.

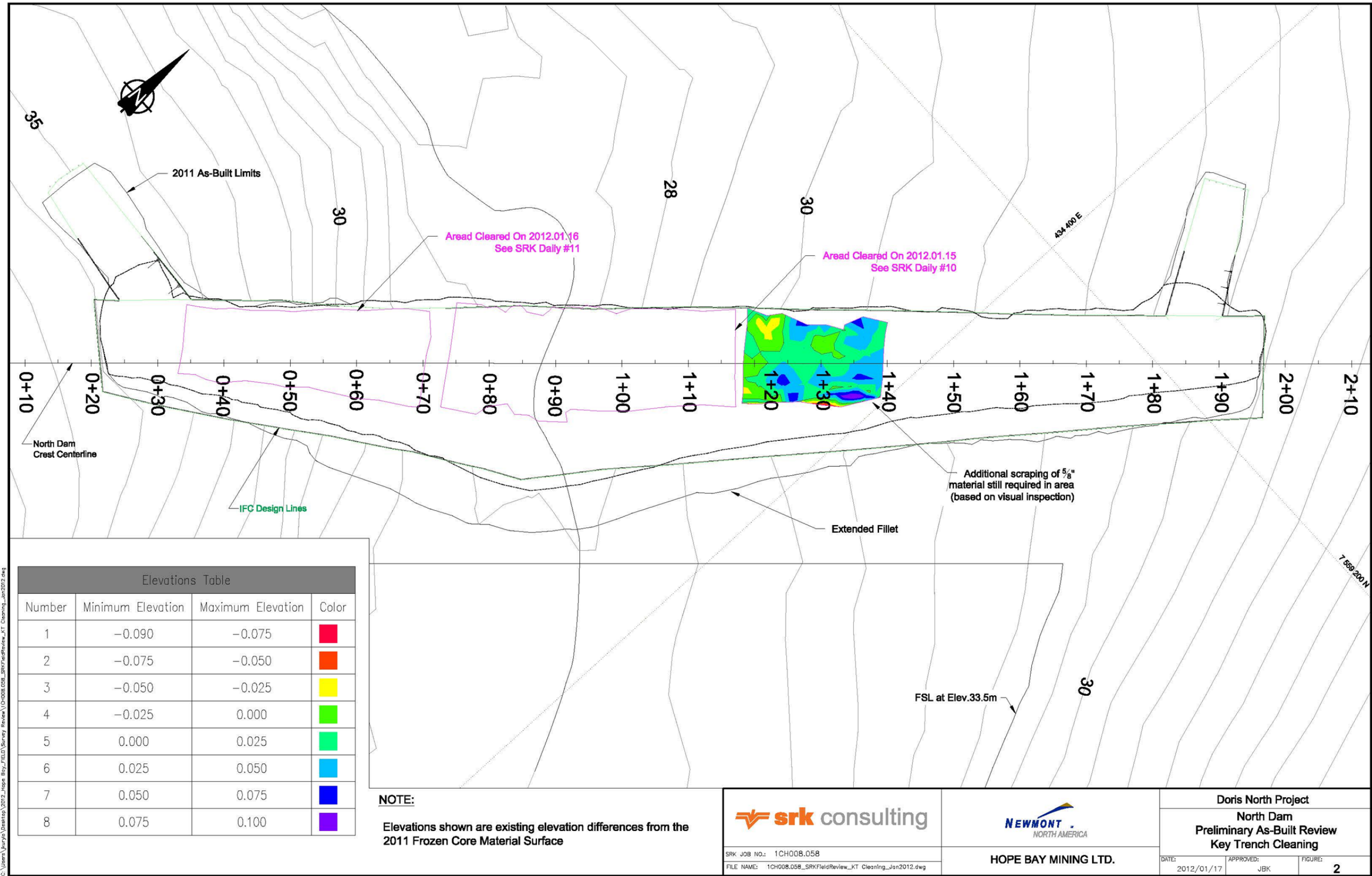


Figure - Nuna As-built review of Cover Material excavation (i.e. Key Trench Cleaning) for 2012/01/17, ~ between stations 1+17 and 1+38.
- Note that the isopach points show the elevation variances from the 2011 Frozen Core surface (+ for above grade, - for cut /below)

